

Company Profile

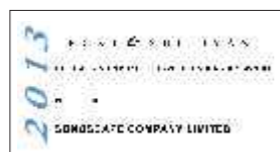
Since its establishment, SonoScape has been committed to providing high quality medical equipment for the healthcare sector. SonoScape specializes in the development and production of diagnostic ultrasound solutions. By introducing advanced imaging techniques, SonoScape has improved diagnostic accuracy and therefore enabled better health outcomes. Since 2002, SonoScape has reached and benefited millions of people. With the world in mind, SonoScape will continue providing more effective and accessible healthcare solutions, through persistent innovation and passion for life.

Quote from the Analyst of

"The Frost & Sullivan Award for Growth Leadership is presented to the company that has demonstrated excellence in capturing the highest annual compound growth rate for the last 3 years...The sales of ultrasound devices contribute an overwhelming proportion of total revenue, helping the company strengthen its leading position to outperform the competitors in the marketplace. With increasing penetration of mid-to high-end ultrasound devices, SonoScape is expected to see significant growth potential in the future..."

Company Milestone

- 2002: Company Founded in Shenzhen, China
- 2003: Released SSI-1000: the 1st 15" Portable Color Doppler system in China
- 2004: Released SSI-2000: the 1st PC platform Color Doppler system in China
- 2005: Received the "High Technology Company" award from the PRC government
- 2007: Received "CHINA TOP BRAND" award in the Medical Equipment Industry
- 2007: Released the 1st Real time 4D ultrasound system in China
- 2008: Received "European Entrepreneurial Company 2008" award from FROST & SULLIVAN
- 2008: Received "Flagship Company" award in the Medical Equipment Industry in China
- 2009: Received "Product Quality Leadership Award 2009" from FROST & SULLIVAN
- 2011: Received the Reddot 2011 Product Design Award for S20 in Essen, Germany
- 2013: Received "Ultrasound Market Growth Leadership Award, 2013" from FROST & SULLIVAN
- 2014: Received the iF Product Design Award 2014 for S9 in Munich, Germany
- 2014: Received "Company of the Year in Ultrasound Market, 2014" from FROST & SULLIVAN



ISO 13485

CE 0197

Delivering Premium Solutions

S9 PRO



U-S9pro20150311



Delivering Premium Solutions

S9 PRO

The S9 Pro is our latest member to the SonoScape Premium HCU family. Combining our latest advances in display technology provides more accurate, faster and effortless diagnosis.

This trend setting and exquisite HCU system will provide all Clinicians with advanced clinical tools and the power to reveal subtle detail which will assist with critical decisions with the greatest of confidence.

Premium Solutions

S9 Pro is an adaptable system capable of providing exceptional diagnostic images for a variety of exam conditions and requirements. This ergonomic, lightweight, HCU system provides clinically proven technologies to improve workflow, patient care and comfort for the user.



- **Real-time 3D (4D)**

With increased physical channels and a new platform, the S9 Pro offers both image quality and frame rates to meet a new standard of SonoScape S series. Thanks to high frame rate and advanced technologies, the 4D imaging of S9 Pro delivers smooth movement of fetus and offer comprehensive 4D acquisition, data rendering, and post-processing functionality.

- **Spatial Compound Imaging**

Spatial Compound Imaging utilizes several lines of sight for optimal contrast resolution, speckle reduction and border detection, with which S9 Pro is ideal for superficial and abdominal imaging with better clarity and improved continuity of structures.

- **Pulse Inversion Harmonic Imaging**

The harmonic signals are fully preserved without degradation of the acoustic information, which makes it possible for S9 Pro to image high-level details and improve contrast resolution by reducing noise and clutter in the visualization of subtle lesions, small parts, vascular and so on.

- **C-Xlasto Elastography**

SonoScape provides S9 Pro with a new method to support the physician in assessing tissue elasticity. C-Xlasto Elastography with Strain Ratio Measurement designs an easy workflow to detect and evaluate palpable masses in breasts, thyroid and musculoskeletal structures, helping to identify early detection of malignant disease and provide functional information on the tissues.

- **Real-time Panoramic Imaging**

The real-time panoramic imaging provides an extended field of view display. By gradually moving the probe laterally across the anatomy, a series of images are switched together to show one continuous image which is wider than scanning width of the probe, offering a larger reference image for documentation of spatial relationship of structures.

- **Stress Echo**

Stress echo is the combination of 2D echocardiography with a physical or pharmacological stress, which can determine how the heart muscles respond to stress and mainly used to diagnose and evaluate coronary artery disease. S9 Pro stress echo package with fully integrated and easily programmable interface can customize your needs and all features help deliver streamlined workflow for wall motion scoring and reporting.

- **High Density Probe**

S9 Pro is equipped with high density phased array probe to meet the needs of both high frame rate and premium resolution in the cardiac imaging. Thanks to the high sensitivity of the color Doppler mapping of SonoScape, S9 Pro provides accurate cardiac diagnosis beyond your imagination.



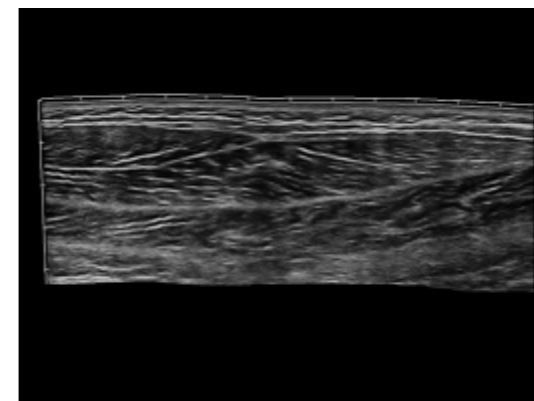
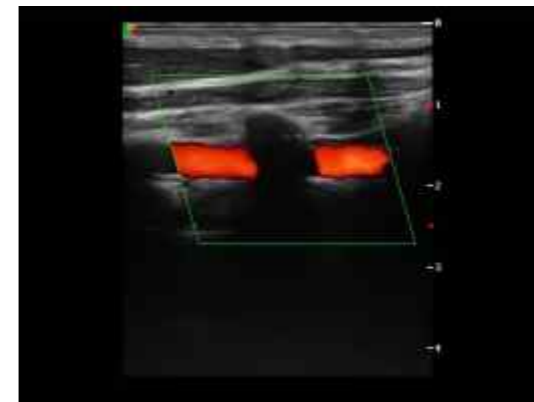
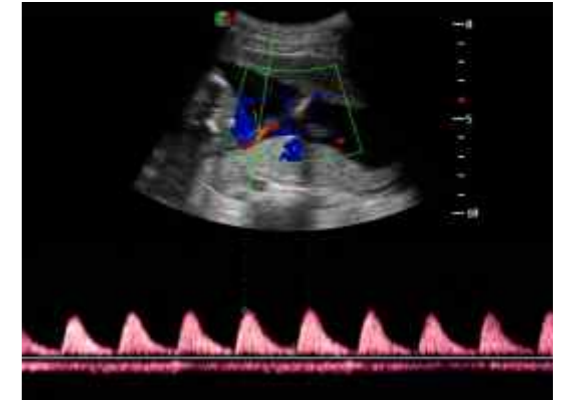
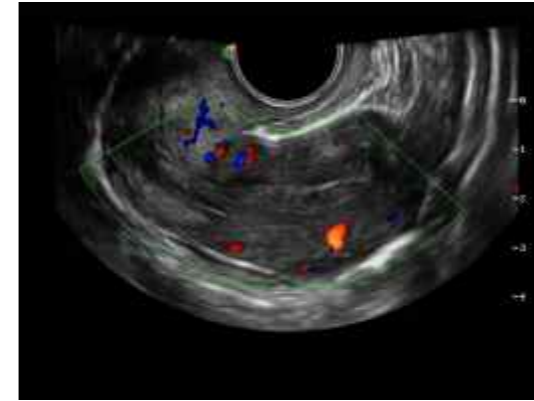
Premium Solutions Anywhere

S9 Pro, successfully blends sensible ergonomics, exquisite styling and ease of use, bringing the clinical benefits of a Premium system to new areas of healthcare.

- Frequently used controls are well located within an intuitive interface, making all operations both easy and accurate.
- 50 degree foldable high resolution color LCD screen guarantees the most comfortable viewing positions available in any environment.
- Its compact size together with internal battery enables you to take control wherever fast, accurate response is needed.



- 50 degree foldable 15" LCD display
- 140 degree opening Angle, Abundant Connection Interface
- Height adjustable Stylish Trolley
- Premium hard shell Flight case



Superior Imaging Quality