

Company Milestone

- 2002: Company Founded in Shenzhen, China
- 2008: Received "European Entrepreneurial Company 2008" award from FROST & SULLIVAN
- 2009: Received "Product Quality Leadership Award 2009" from FROST & SULLIVAN
- 2011: Received the Reddot 2011 Product Design Award for S20 in Essen, Germany
- 2013: Received "Ultrasound Market Growth Leadership Award, 2013" from FROST & SULLIVAN
- 2014: Received the iF product design award 2014 for S9 in Munich, Germany
- 2014: Received "Company of the Year in Ultrasound Market, 2014" from FROST & SULLIVAN
- 2016: Received "Product innovation in Electronic Endoscopy Market" from FROST & SULLIVAN
- 2017: Received the iF product design award 2017 for X5 in Munich, Germany
- 2017: Listed on Shenzhen Stock Exchange on April



ISO 13485

CE 0197



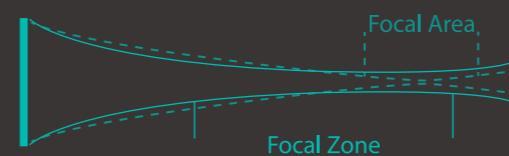
P10

Ultrasound Solutions
with Flexibility



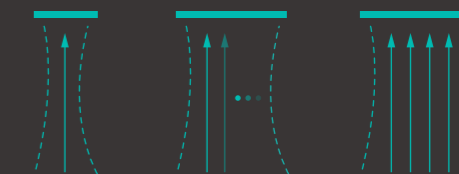
The P10 color Doppler ultrasound system is a new generation product from SonoScape. It is designed to give high quality images, rich probe configurations, various clinical tools and automatic analysis software to provide you with comprehensive solutions for your growing demand for clinical applications.

Classic Inheritance



C-field Beam

Unlike the traditional focus concentrating on limited areas, C-field beam, with a continuously dynamic focus that evenly distributes the signal energy, contributes to better uniformity in the whole image.



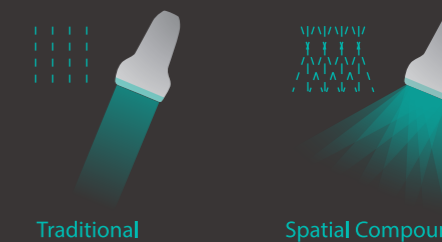
Dynamic Multi-beam Imaging

To dynamically provide multiple beams from different scanning modes to balance parameter demands in various applications, presenting detailed information with good spatial resolution or real time movement with suitable line density and frame rate.



Pure Inversion Harmonic Imaging







It fully preserves harmonic signals without any degradation of the acoustic information, improving contrast resolution by reducing noise and clutter in the visualization of small parts, lesions, vascular and so on.



Spatial Compound Imaging

Spatial Compound Imaging utilizes several lines of sight for optimal contrast resolution, speckle reduction and border detection, with which the P10 is ideal for superficial and abdominal imaging with better clarity and improved continuity of structures.

Compact Exquisiteness

-  Large size monitor and sensitive touch screen
-  Sliding keyboard
-  Five probe connectors
-  Removable probe holders
-  Height adjustable and rotatable control panel
-  Large capacity built-in battery

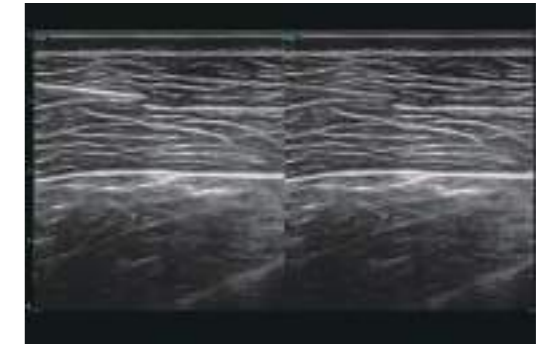


Specialized Functions



SR Flow

As a new innovative technology, SR Flow improves the capability of detecting low velocity flow signals. It also improves on spatial resolution and overcomes overflow to present users with real hemodynamic information.



Vis-Needle

Vis-Needle is realized by ultrasound beam steering and deflection. It improves visualization of the needle location in the tissue to minimize harm to the surrounding tissue, increasing the initial success rate and lowering the risk for needle puncture.



Real-time Panoramic

With real-time panoramic, you can acquire an extended field of view for large organs or lesions for easy measurements and diagnostic efficiency.



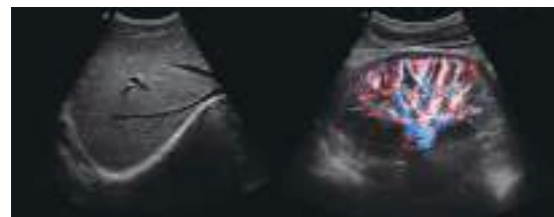
WideScan

With WideScan, the ultrasound image can be enlarged when performing a real time scan by using linear or convex probes, for a more complete view of large lesions or anatomic structures.



Comprehensive Applications

P10 offers a comprehensive selection of electronic probes to maximize its capabilities to meet a wide range of applications including abdomen, pediatric, OB/GYN, cardiovascular, musculoskeletal, etc. The advanced probe technologies also effectively enhance the image quality and confidence in reaching clinical diagnoses, even in difficult patients.



Convex Probe 3C-A

Ideal for an abundant amount of application such as abdomen, gynecology, obstetrics, urology and even abdomen biopsy.



Linear Probe L741

This linear probe is designed to satisfy vascular, breast, thyroid and other small parts diagnosis, and its adjustable parameters could also present users a clear view of MSK and deep vessels.



Phase Array Probe 3P-A

For the purpose of adult and pediatric cardiology and emergency, the phase array probe provides elaborate presets for different exam modes, even for difficult patients.



Intracavitary Probe 6V1

Intracavitary probe could face application of gynecology, urology, prostate, and its temperature detection technology not only protects the patient but also extends the service life.

